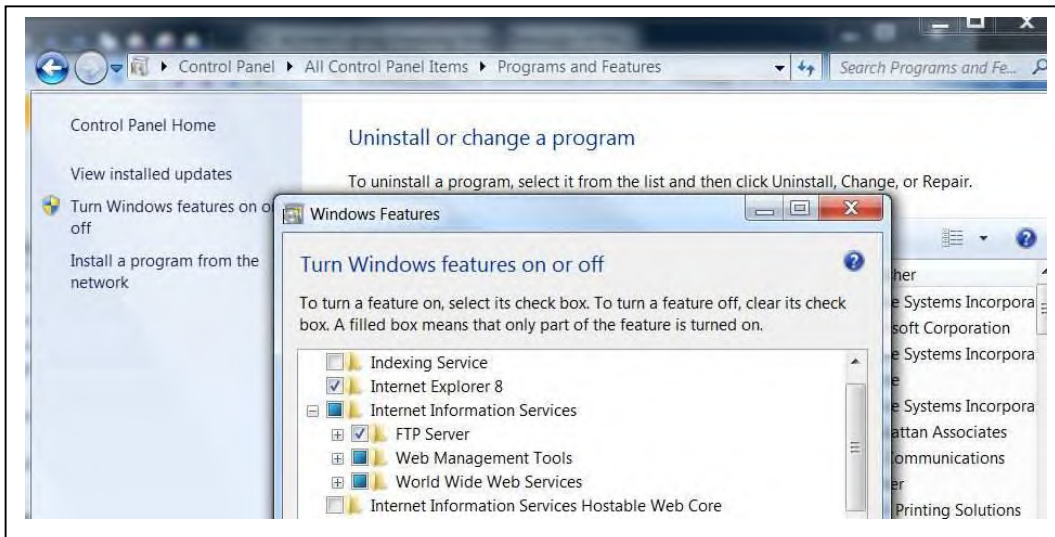


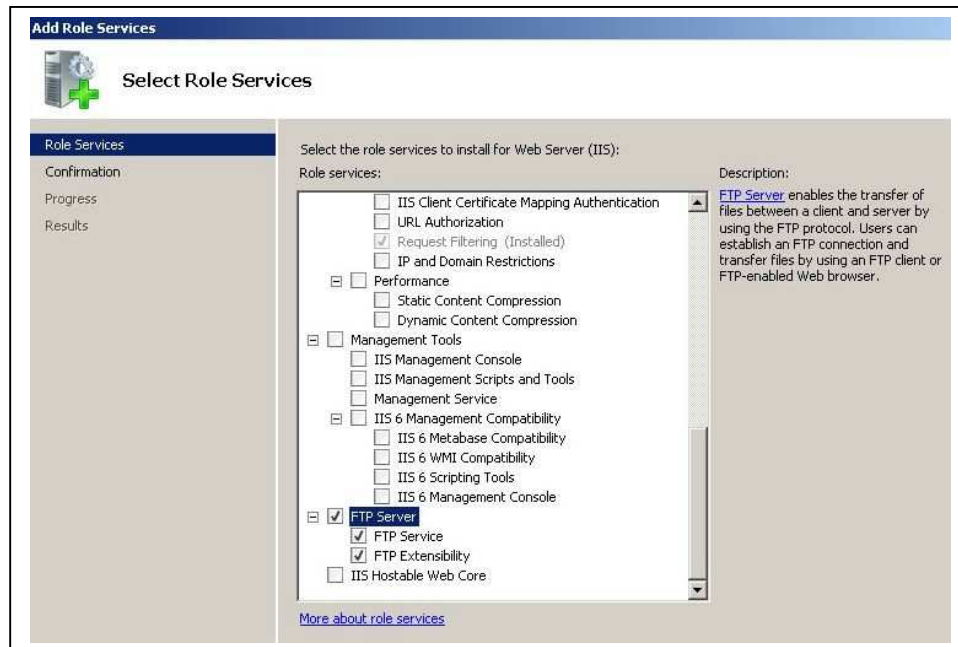
FTPing MCP file to a Windows Machine

- 1) FTP server must be installed on MCP server and destination machine. It is one of the IIS services.
 - a. Add the FTP Role (service):
 - i. Windows 7: Control Panel > Programs > Windows Features >
 - ii. Windows Server 2008r2: Administrative Tools > Server Manager
 - b. Right-click on Roles & select "Add role services"
 - i. Check Web Server (IIS) and Check FTP Server;
 1. Click: Next, Install, close.

PC



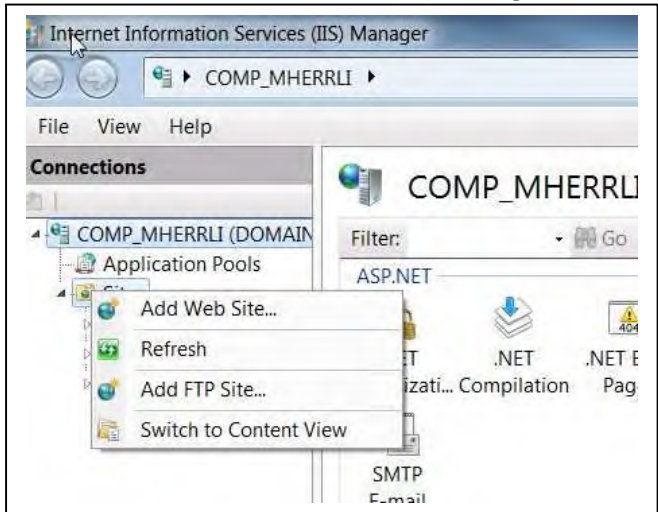
Server



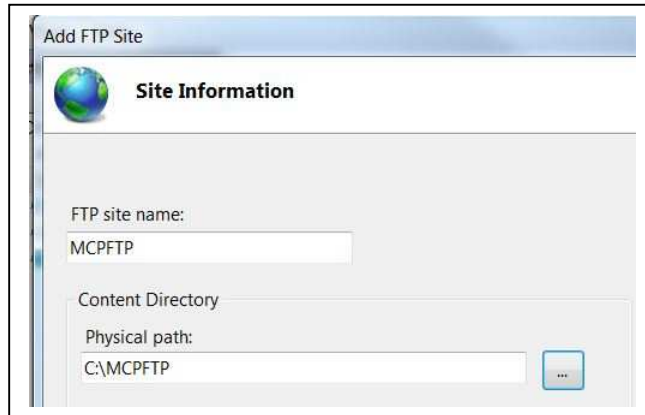
1. Restart World Wide Web Publishing service. May need to reboot computer.

2) Set up the FTP site. (*The destination folder*)

- a. Open IIS manager: Administrative Tools > Internet Information Services (IIS) Manager
- b. Tree down to sites.
- c. Right click on Sites > Add **FTP** site

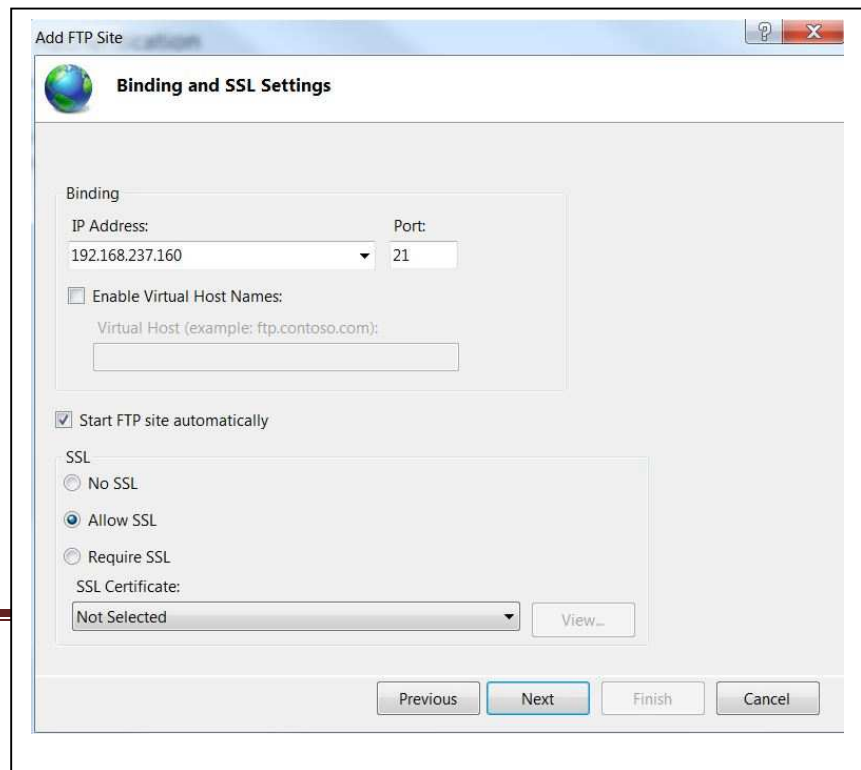


d. Assign FTP site name (Virtual name) and Physical Path

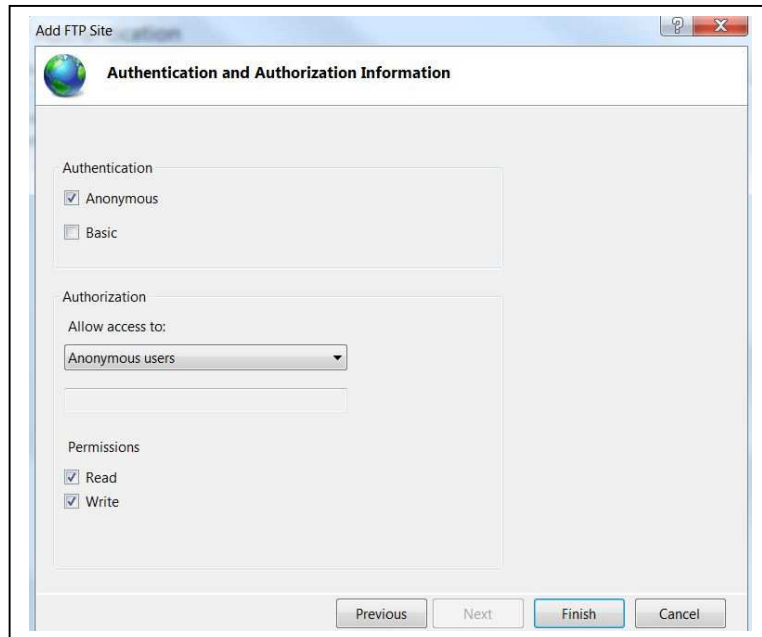


Next

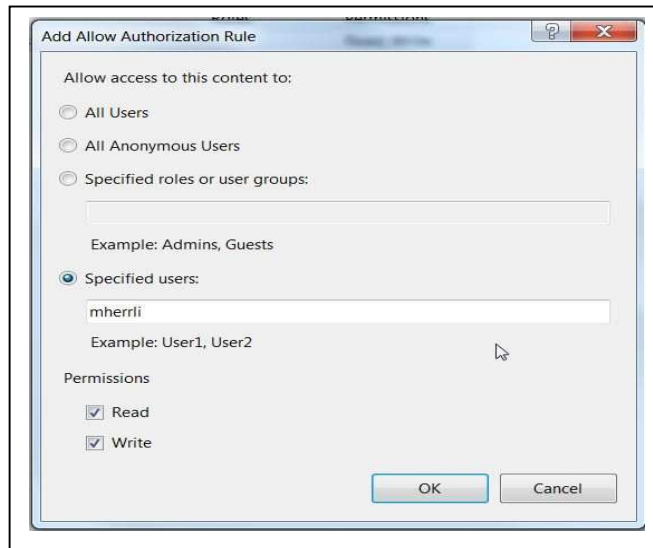
- e. Enter Binding info.
 - i. IP or name



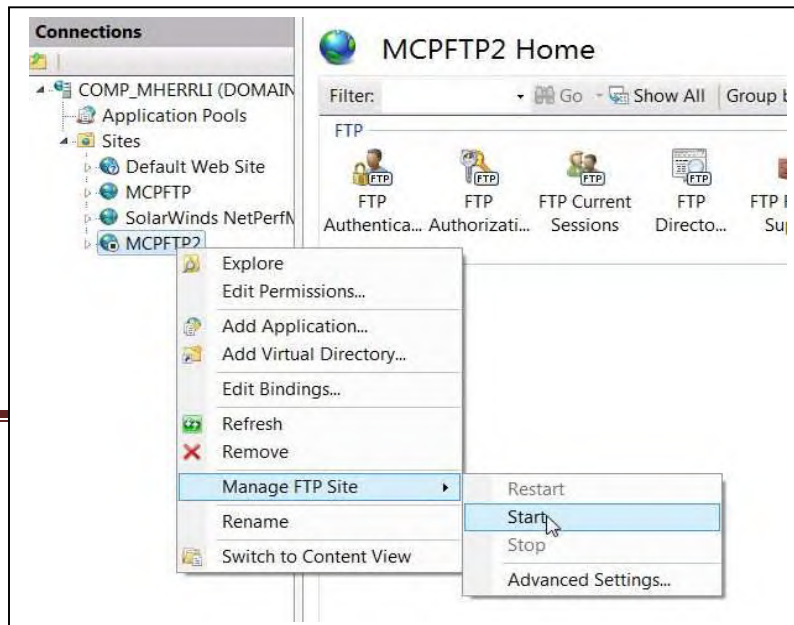
- f. Authentication and Authorization Information: Anonymous or with username
Anonymous:



User:



- 3) Start the FTP site:



4) Clearpath

FTP Services is a distributed systems service (DSS) and is handle by DSS.

Make sure the FTP SL FTPSUPPORT library is enabled.

SL FTPSUPPORT

Response: SL FTPSUPPORT = *SYSTEM/FTP/SUPPORT ON DISK

5) Create a WFL:

```
NEXT+ ....*....1....*....2....*....3....*....4....*....5....*....6....*....7..
0000100BEGIN JOB WFL/CRS/FTP/MHERRLI (STRING MCPIN, STRING PCOUT);
00001400
00001500 COPY #MCPIN
00001600 AS #PCOUT
00001700 FROM SDI(PACK)
00001800 TO DISK(IPADDRESS = "192.168.237.160",
00001900 USERCODE = 'ANONYMOUS' );
00002000%%%% USERCODE = 'MHERRLI'/'mypassword');
00008200 END JOB;
```

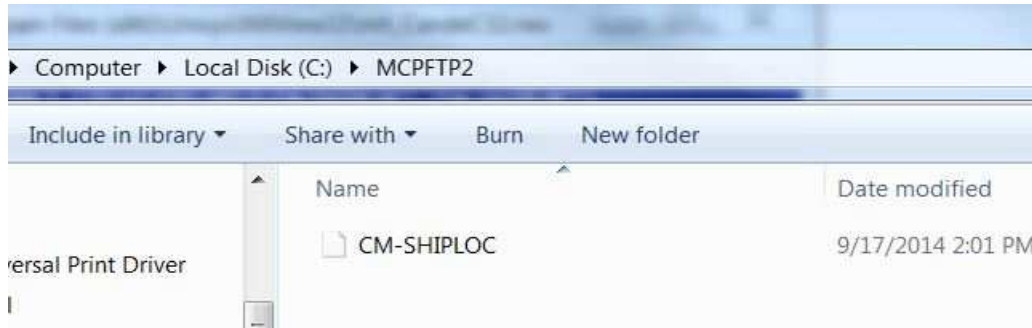
6) Start the transfer:

```
ST WFL/CRS/FTP/MHERRLI ("FLAT/CRS/HELP/CM/SHIPLOC","CM-SHIPLOC")
```

7) ST WFL/CRS/FTP/MHERRLI ("FLAT/CRS/HELP/CM/SHIPLOC","CM-SHIPLOC")

```
#RUNNING 2594
#JOB 2595 IN QUEUE 0
#2595 BOJ WFL/CRS/FTP/MHERRLI
#2595\2596 BOT *FILE/TRANSFER
#
#2595\2597 BOT (PLUS)FTP/FILE/TRANSFER/TO/DNS_HOST
#2595\2598 BOT (PLUS)FTP/HELPER/FOR/BATCH/CLIENT/MIX_2597
#2597 FTP:FLAT/CRS/HELP/CM/SHIPLOC ON SDI COPIED AS CM-SHIPLOC FROM HOST MCP1
TO HOST "192.168.237.160"
#2595\2598 EOT (PLUS) (PLUS)FTP/HELPER/FOR/BATCH/CLIENT/MIX_2597
#2595\2597 EOT (PLUS) (PLUS)FTP/FILE/TRANSFER/TO/DNS_HOST
#2596 DSS:PK501 REMOVED (PLUS)FTRECOVERY/02595/07076826/001 ON SDI
#2595\2596 EOT (PLUS) *FILE/TRANSFER
#2595\2595 EOJ (PLUS) JOB WFL/CRS/FTP/MHERRLI
```

8) The result in the directory of the destination machine:



Suggested References:

ClearPath Enterprise Servers

TCP/IP Distributed Systems Services Operations Guide (Doc and PDF)

WFL Made Simple (Unisys doc)

Set Up FTP in IIS 7

<http://technet.microsoft.com/en-us/library/cc771012%28v=ws.10%29.aspx>

Understanding IIS Bindings, Websites, Virtual Directories, and lastly Application Pools

<http://blogs.technet.com/b/chrade/archive/2010/01/24/understanding-iis-bindings-websites-virtual-directories-and-lastly-application-pools.aspx>

Presented by Michelle Herrli, LaSalle Company, Inc.