

I Didn't Know You Could Do That!

FTPing MCP files to a Windows machine

Michelle Herli
LaSalle Company, Inc.

Reasons to FTP a MCP file.

- The record size/type is not compatible to be viewed with CANDE.
- You want to view a file in Excel or another Window format.
- The file is large and it would better to use Windows resources to view the file.
- You are testing the results of a file, and need to run a job several times.
- It's easier to FTP the file than to drag and drop, and possibly rename a file.

Michelle Herli, LaSalle Company, Inc.

Setting up the Windows Machine

FTP is part of the IIS service. IIS and FTP must be installed.

Add the FTP Role (service):

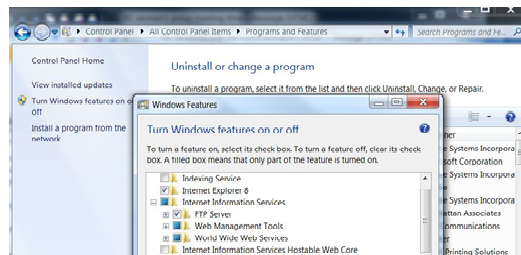
Windows 7: Control Panel > Programs > Windows Features >

Windows Server 2008r2: Administrative Tools > Server Manager

Right-click on Roles & select "Add role services"

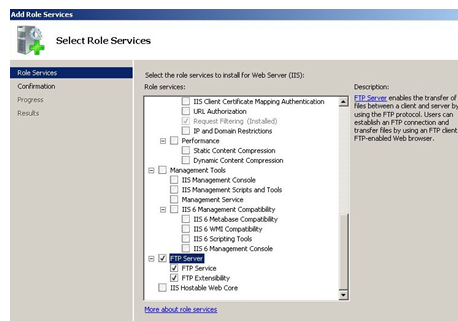
Check Web Server (IIS) and Check FTP Server; and Install

PC setup



Michelle Herrli, LaSalle Company, Inc.

Server setup



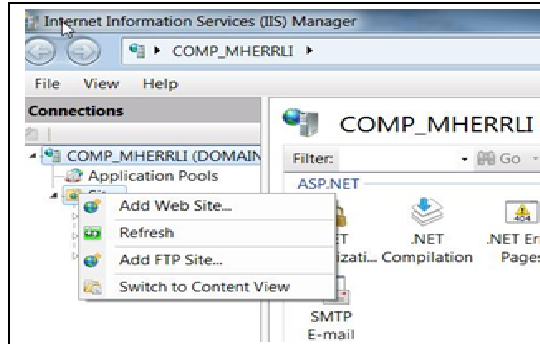
Restart World Wide Web Publishing service.

May need to reboot computer.

Michelle Herrli, LaSalle Company, Inc.

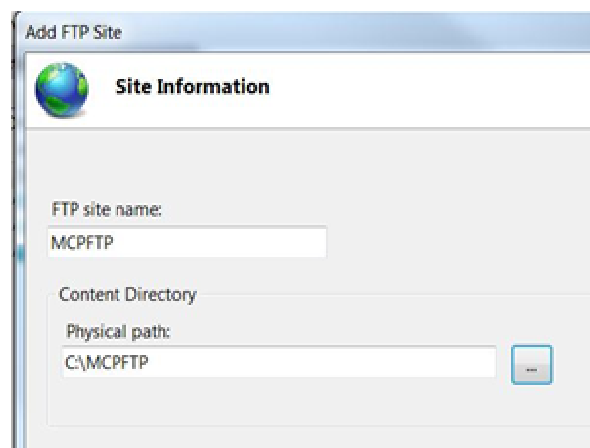
Set up the FTP site. (The destination folder)

- Open IIS manager:
 - Administrative Tools >
 - Internet Information Services (IIS) Manager
- Tree down to sites.
- Right click on Sites > Add **FTP** site



Michelle Herrli, LaSalle Company, Inc.

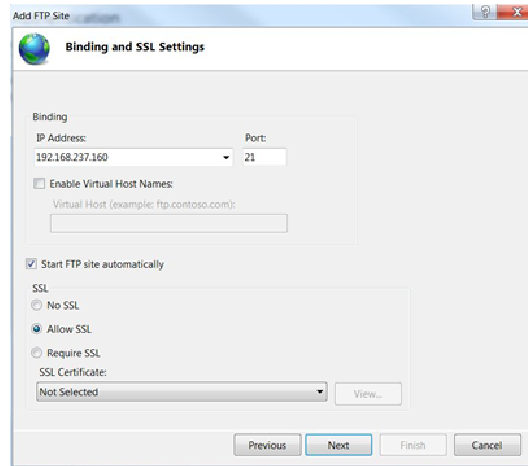
Assign FTP site name (virtual name) and Physical Path



Michelle Herrli, LaSalle Company, Inc.

Enter Binding Information

An IP address can be used, or a virtual FTP server name.
In this example the IP number is used.



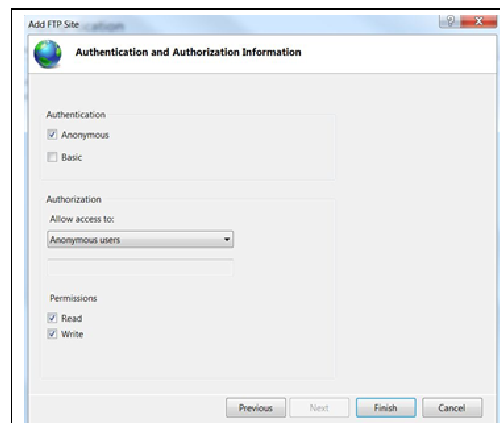
The screenshot shows the 'Add FTP Site' dialog box with the 'Binding and SSL Settings' tab selected. The 'Binding' section has 'IP Address' set to '192.168.237.160' and 'Port' set to '21'. The 'Enable Virtual Host Names' checkbox is unchecked. The 'Start FTP site automatically' checkbox is checked. The 'SSL' section has 'Allow SSL' selected. The 'SSL Certificate' dropdown is set to 'Not Selected'.

Michelle Herrli, LaSalle Company, Inc.

Setup Authentication and Authorization Information

It can be set up as an anonymous user or for a specific user.

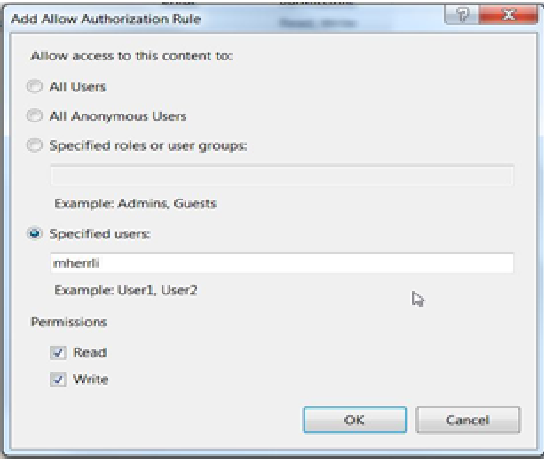
Setup for
anonymous user



The screenshot shows the 'Add FTP Site' dialog box with the 'Authentication and Authorization Information' tab selected. The 'Authentication' section has 'Anonymous' checked. The 'Authorization' section has 'Allow access to' set to 'Anonymous users'. The 'Permissions' section has 'Read' and 'Write' checked.

Michelle Herrli, LaSalle Company, Inc.

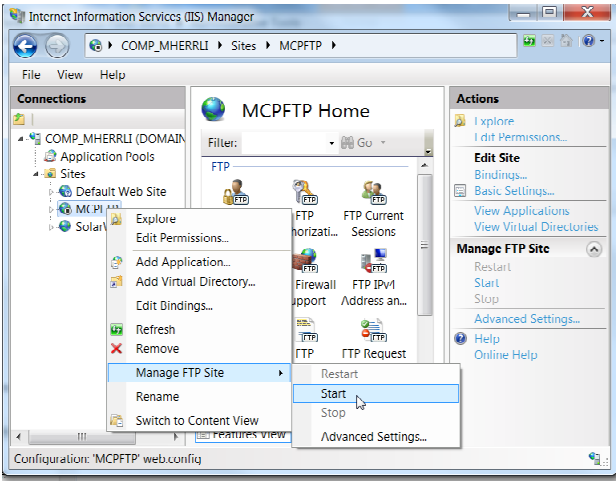
Authentication setup
for a specific user



Michelle Herrli, LaSalle Company, Inc.

Start the FTP site

Right-click MCPFTP > Manage FTP site > Start



Michelle Herrli, LaSalle Company, Inc.

Clearpath

FTP Services is a distributed systems service (DSS) and is handled by DSS.

Make sure the FTP SL FTPSUPPORT library is enabled.
SL FTPSUPPORT

Response: SL FTPSUPPORT = *SYSTEM/FTP/SUPPORT ON DISK

Michelle Herrli, LaSalle Company, Inc.

Create a WFL:

```
NEXT+ ....*....1....*....2....*....3....*....4....*....5....*....6....*....7..
0000100BEGIN JOB WFL/CRS/FTP/MHERRLI (STRING MCPIN, STRING
PCOUT);
00001400
00001500 COPY #MCPIN
00001600 AS #PCOUT
00001700 FROM SDI(PACK)
00001800 TO DISK(IPADDRESS = "192.168.237.160",
00001900 USERCODE = 'ANONYMOUS' );
00002000% % % USERCODE = 'MHERRLI'/'mypassword');
00008200 END JOB;
```

```
ST WFL/CRS/FTP/MHERRLI ("FLAT/CRS/HELP/CM/SHIPLOC", "CM-SHIPLOC")
```

Michelle Herrli, LaSalle Company, Inc.

Suggested References:

ClearPath Enterprise Servers

TCP/IP Distributed Systems Services Operations Guide (Doc and PDF)

WFL Made Simple (Unisys doc)

Set Up FTP in IIS 7

<http://technet.microsoft.com/en-us/library/cc771012%28v=ws.10%29.aspx>

Understanding IIS Bindings, Websites, Virtual Directories, and lastly Application Pools

<http://blogs.technet.com/b/chrad/archive/2010/01/24/understanding-iis-bindings-websites-virtual-directories-and-lastly-application-pools.aspx>